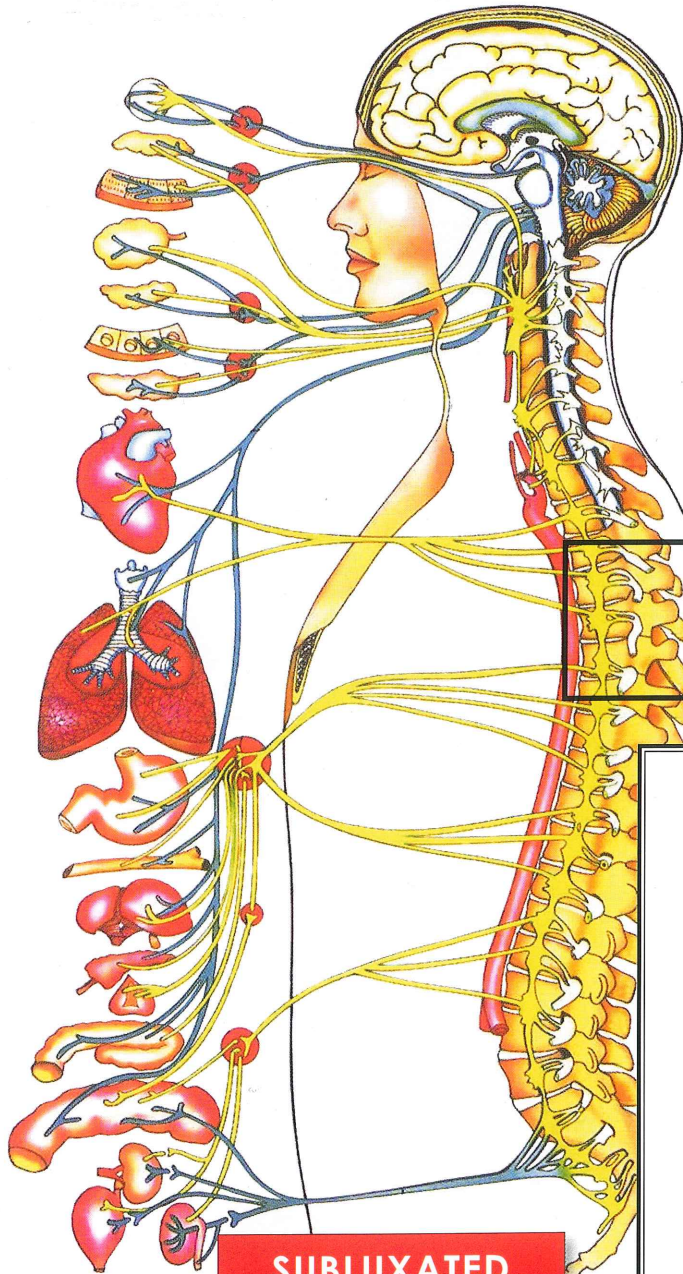


# VERTEBRAL SUBLUXATION



**Uninterrupted Nerve Channels Ensure That The Body Functions At Its Optimal Efficiency.**

- Your pain or health problem may be affected by Vertebral Subluxation (VS).
- Vertebral subluxation can place undue stress on the discs between the vertebrae.
- The subluxation of the disc may negatively affect the transmission of electrical impulses between the organ and tissues of the body. This may result in ill health.

**SUBLUXATED VERTEBRA**  
(Bone out of place)

**"SLIPPED" SPINAL DISC**  
Disc shown as compressed and wedged

**PINCHED SPINAL NERVE**

