

SECIL ARGAMASSAS



# SecilVit CORK

EXTERNAL THERMAL INSULATION SYSTEM

100% NATURAL

# SecilVit CORK

MAXIMUM THERMAL, ACOUSTIC AND ENVIRONMENTAL PERFORMANCES

The **SecilVit CORK** system links the superior thermal performance of an ETICS system with an efficient environmental performance.

Effectively, the use of 100% natural expanded cork panels on the total external cover of a building, ensures the maximum thermal insulation and a significant acoustic protection, simultaneously preserving the environment.

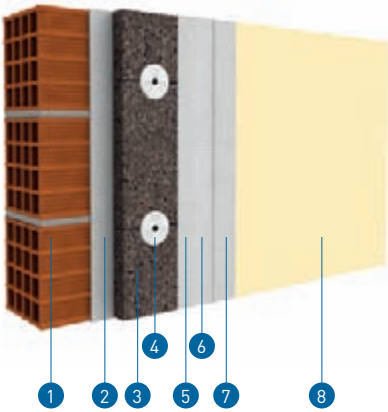
Natural and renewable (extracted from the cork-oak tree every 9 years), the cork supplied by Secil Argamassas in the **SecilVit CORK** system is a breathable insulating material, free from any chemicals, synthetic resins

or carcinogenic materials, which contributes for a healthy environment inside our homes. The cork's low thermal conductivity ( $\lambda=0,037$  W/m.K) offers a high energy efficiency, thus contributing for an environmental and economic saving. The adhesive mortar

**ADHERE Vit ecoCORK**, constituted also by Hidraulic Natural Lime and cork aggregates, ensure the perfect compatibility and secure the correct fixing of the insulation cork panels completed by the **REABILITA CAL FINISHING**, 100% Hidraulic Natural Lime mortar and an effective protection against harsh weather.



## 1 APPLICATION



### LEGEND

- 1 Substrate
- 2 **ADHERE Vit ecoCORK**
- 3 Cork Insulation Panel
- 4 SeciVit Anchor
- 5 **ADHERE Vit ecoCORK**
- 6 SeciVit Mesh 160
- 7 **ADHERE Vit ecoCORK**
- 8 **REABILITA CAL FINISHING**  
(Requires a water-based or silicate-based finish)

## 2 PRODUCTS



### ADHERE Vit ecoCORK

With Cork aggregates and NHL, it's a mortar of high performances for the fixing, levelling and reinforcement of the cork panels over usual substrates, in new construction, and over old substrates in rehabilitation works.

#### THEORETICAL CONSUMPTION

3,2 kg/m<sup>2</sup> for fixing  
1,3 kg/m<sup>2</sup> for plastering

#### PACKAGING

20kg bags  
60 bags per pallet



### REABILITA CAL FINISHING

Natural, ocre or brick colour  
Natural Hydraulic Lime mortar, of high performances for the finishing of the **SeciVit CORK** system.

#### THEORETICAL CONSUMPTION

2 kg/m<sup>2</sup>

#### PACKAGING

25kg bags  
60 bags per pallet

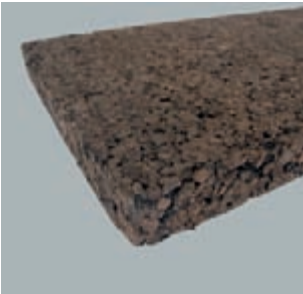
## PRODUCT TECHNICAL TABLES

Thickness (mm)	Thermal Resistance R (m <sup>2</sup> .K/W)
60	1,50
80	2,00
100	2,50
120	3,00
140	3,50
160	4,00
180	4,50
200	5,00

Expanded insulation cork panel	
DENSITY	Approx. 120 kg/m <sup>2</sup>
THERMAL CONDUCTIVITY	0,037/0,040 W/m.K
RESISTANCE TO COMPRESSION AT 10% DEFORMATION (EN 826)	100 Kpa
PERPENDICULAR FACE RESISTANCE (EN 1607)	60 Kpa (TR50)
DIMENSIONAL STABILITY	Stable: does not expand or contract
LONGITUDE TOLERANCE (EN 822)	Between +/- 3 y 5 mm
THICKNESS TOLERANCE (EN 823)	Between +/- 1 y 2 mm
SERVICE TEMPERATURE	-180 °C to +120 °C
REACTION TO FIRE (EN 13501-1)	Class E
WATER ABSORPTION (EN 1609)	0,36 Kg/m <sup>2</sup>
RESISTANCE TO WATER VAPOUR DIFUSION	5-30 µ
WATER VAPOUR CONDUCTIVITY	0,017 à 0,003 g/mh mm of section
DURABILITY	Practically unlimited
CERTIFICATIONS (EN 13170 + EN 13172)	CSTB (France) and LNEC (Portugal)
DIMENSION OF BOARDS (*)	1000x500 mm
BOARD THICKNESS	10 to 320 mm

(\*) Also available in Tongue and Groove system

### 3 ACCESSORIES



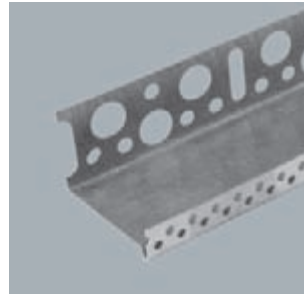
#### Insulation Cork Panel

Cork insulation panel with high thermal and acoustic performances  
 $\lambda = 0,037 \text{ W/m.K}$ ; Dimensions: 1000 x 500 mm (Length x width)  
 Available in 60 to 200 mm thickness



#### SeciVit Mesh 160 SeciVit Mesh 343

Mesh with double torsion wires, 100% fibreglass, with anti-alkaline treatment, width 100cm  
**R160:** 160gr/m<sup>2</sup>; mesh size: 4x5mm (+10%);  
**R343:** 343 g/m<sup>2</sup>; mesh size: 6x6mm (+5%)



#### SeciVit Aluminum Start-up Profile

Straight start-up profile, in aluminum, with dripper; length 2,5m



#### SeciVit Fixing Screw

For the fixation of start-up profiles  
**CONSUMPTION:** 4 to 5 units/profile



#### SeciVit Spacer

Spacer for start-up profile  
**THICKNESSES:** 2, 3, 4, 5 and 10mm



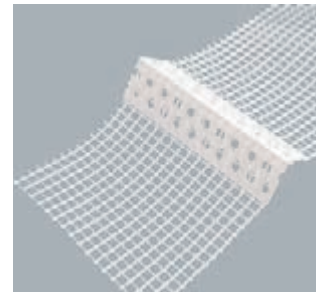
#### SeciVit Fixing Plug for masonry substrates

Expansive fixing plug with polypropylene nail for masonry or concrete  
**CONSUMPTION:** 6 to 10 units/m<sup>2</sup>, depending on the fixing requirements



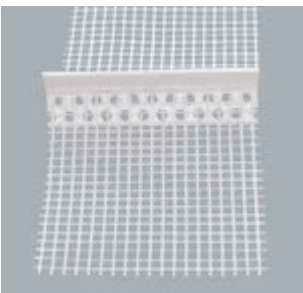
#### SeciVit Fixing Plug for wood substrates

Fixing plug with polypropylene nail for wood, OSB and Viroc substrate  
**CONSUMPTION:** 6 to 10 units/m<sup>2</sup>, depending on the fixing requirements



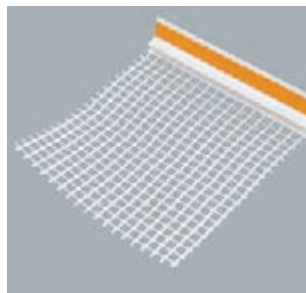
#### SeciVit PVC Corner Profile

PVC corner profile with net incorporated, length 2,5m



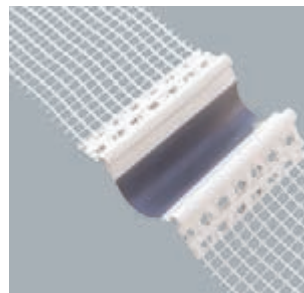
#### SeciVit Dripper Profile

PVC dripper profile, with net incorporated, for horizontal surfaces; length 2,5m



#### SeciVit Window Trimming Profile

PVC window trimming profile, with net incorporated, length 2,5m



#### SeciVit Expansion Joint Profile

PVC expansion joint profile; length 2,5m

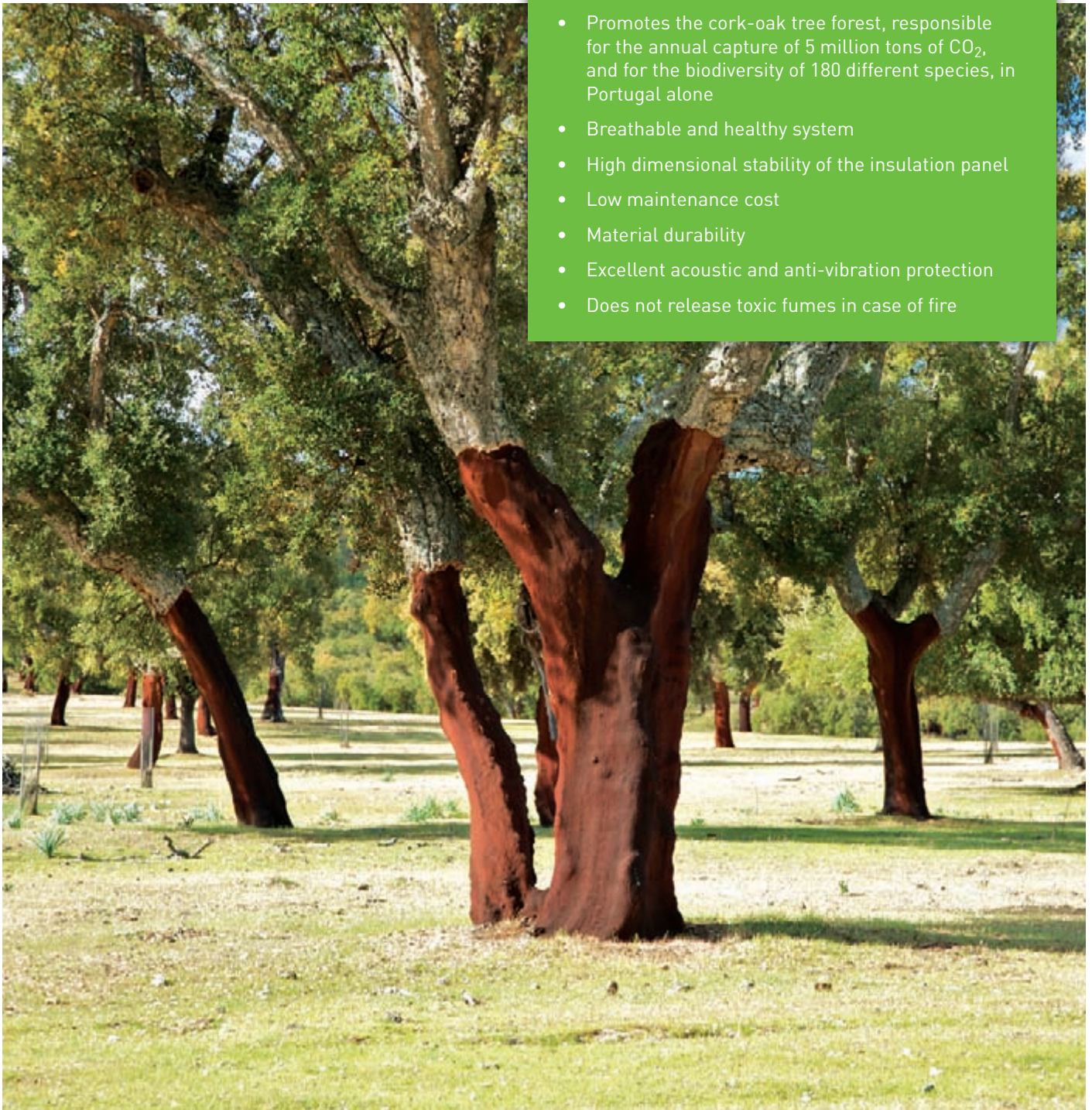
# NHL and CORK

## THE PERFECT MATCH

With a clearly superior ductility and ability to withstand high tensions which may cause cracking, mortars based on NHL and Cork aggregates also have a low permeability resistance to water vapor, taking advantage of the full potential of the Cork insulation panels. Cork, a renewable raw material, 100% natural and a thermal insulation material, acoustic and anti-vibration - its addition in mortars offers the guarantee of increased durability, without losing its resistance and adhesion characteristics.

### ADVANTAGES

- Excellent thermal protection
- High thermal inertia
- Reduction of energy costs
- Superior environmental performance
- 100% Natural and renewable insulation
- Recyclable system
- Promotes the cork-oak tree forest, responsible for the annual capture of 5 million tons of CO<sub>2</sub>, and for the biodiversity of 180 different species, in Portugal alone
- Breathable and healthy system
- High dimensional stability of the insulation panel
- Low maintenance cost
- Material durability
- Excellent acoustic and anti-vibration protection
- Does not release toxic fumes in case of fire



Distributed by:



Secil Argamassas  
Apartado 2, 2406-909 Maceira LRA  
PORTUGAL

Tel.: +351 244 770 220  
Fax: +351 244 777 997

Email: [comercial@secilmartinganca.pt](mailto:comercial@secilmartinganca.pt)  
Site: [www.secilmartinganca.pt](http://www.secilmartinganca.pt)

 **SECIL  
ARGAMASSAS**  
Faz parte da Solução