

Libertarian National Committee - Membership Report

"Donor" Totals - Sep-21

4 Year & 12 Month Comparison

	Dec-17	Dec-18	Dec-19	Dec-20	Sep-20	Oct-20	Nov-20	Dec-20	Jan-21	Feb-21	Mar-21	Apr-21	May-21	Jun-21	Jul-21	Aug-21	Sep-21
Active w-MEM	14445	14494	15711	20050	20436	20434	20481	20050	20841	20643	20527	20360	20113	19062	18371	17803	17553
Active w/out MEM	553	514	421	725	658	707	718	725	743	732	734	721	689	562	530	493	481
Total Active Donors	14998	15008	16132	20775	21094	21141	21199	20775	21584	21375	21261	21081	20802	19624	18901	18296	18034
Percent Change					1.67%	0.22%	0.27%	-2.00%	3.89%	-0.97%	-0.53%	-0.85%	-1.32%	-5.66%	-3.68%	-3.20%	-1.43%
Lapsed/Drop MEM	1072	1184	844	1477	909	1332	1286	1477	998	1109	1004	1332	1561	2151	1571	1488	1382
Lapse w/out MEM	23	27	26	21	14	15	9	21	14	20	7	20	37	139	42	48	42
Lapsed/Drop Total	1095	1211	870	1498	923	1347	1295	1498	1012	1129	1011	1352	1598	2290	1613	1536	1424
Percent Change					-19.04%	45.94%	-3.86%	15.68%	-32.44%	11.56%	-10.45%	33.73%	18.20%	43.30%	-29.56%	-4.77%	-7.29%
New Donors w-MEM	444	159	612	275	689	628	774	275	611	219	190	311	321	274	195	232	297
New w/out MEM	15	14	11	20	29	61	18	20	25	7	6	12	5	5	5	11	30
New Total	459	173	623	295	718	689	792	295	636	226	196	323	326	279	200	243	327
Percent Change					-24.10%	-4.04%	14.95%	-62.75%	115.59%	-64.47%	-13.27%	64.80%	0.93%	-14.42%	-28.32%	21.50%	34.57%
Renewed w-MEM	651	564	672	771	547	702	559	771	1178	692	698	854	993	826	685	688	835
Renewed w/out MEM	4	2	16	8	4	3	2	8	7	2	3	-5	0	7	5	0	0
Total Renewals	655	566	688	779	551	705	561	779	1185	694	701	849	993	833	690	688	835
Percent Change					-21.62%	27.95%	-20.43%	38.86%	52.12%	-41.43%	1.01%	21.11%	16.96%	-16.11%	-17.17%	-0.29%	21.37%
Total "MEM"	138815	137321	141386	149486	147813	148460	149219	149486	150473	150786	151105	151565	152094	152454	152772	153113	153541
Percent Change					0.03%	0.44%	0.51%	0.18%	0.66%	0.21%	0.21%	0.30%	0.35%	0.24%	0.21%	0.22%	0.28%
Total "LIFETIME"	2618	2652	2725	2874	2854	2861	2867	2874	2888	2887	2895	2898	2902	2912	2920	2920	2934
Total "BSM"	14668	14639	15627	19803	20023	20138	20158	19803	20215	20002	19834	19834	19354	18540	17578	17095	16835
Active Mo Pledgers	1259	1319	1390	2059	1826	1904	1964	2059	2153	2516	2602	2724	2802	2920	3020	3020	3061
Percent Change					1.39%	4.27%	3.15%	4.84%	4.57%	16.86%	3.42%	4.69%	2.86%	4.21%	3.42%	0.00%	1.36%

Last Year vs. This Year

	Sep-20	Sep-21	Change	12 Mo Ave
Active w-MEM	20436	17553	-14.11%	19687
Active w/out MEM	658	481	-26.90%	653
Total Active Donor	21094	18034	-14.51%	20339
Lapsed/Dropped	923	1424	54.28%	1425
New Donors	718	327	-54.46%	378
Renewals	551	835	51.54%	793

Active Donors w-MEM = 17553

Lapsed & Zero Dues MEM = 135988

Total "MEM" w-Signed Certificate = 153541

Member Signed Certificate = "MEM"

Total "BSM" = 16835

Bylaws Defined Sustaining Member = "BSM"

Sep-21 MEMBERSHIP BY STATE --- ACTIVE AND NON ACTIVE

SUSTAINING MEMBERSHIP STATE RANKINGS - "BSM"

STATE	TOTAL "MEM"	ACTIVE "MEM"	ACTIVE "SUB"	TOTAL "ACTIVE"	TOTAL "BSM"	STATE	TOTAL "MEM"	ACTIVE "MEM"	ACTIVE "SUB"	TOTAL "ACTIVE"	TOTAL "BSM"
AK	706	71	1	72	69	MT	661	85	6	91	78
AL	2101	207	2	209	204	NC	3986	455	8	463	429
AR	1066	123	4	127	120	ND	302	43	0	43	39
AZ	3784	463	11	474	439	NE	766	111	0	111	111
CA	19320	1659	66	1725	1621	NH	1627	229	4	233	216
CO	4352	570	13	583	541	NJ	3281	383	11	394	367
CT	1621	194	6	200	189	NM	1295	145	4	149	141
DC	374	31	3	34	30	NV	2121	250	11	261	240
DE	469	70	1	71	69	NY	5625	805	23	828	778
FL	9348	972	35	1007	924	OH	5784	724	12	736	695
GA	6403	589	10	599	554	OK	1325	184	2	186	176
HI	560	54	4	58	55	OR	2445	217	10	227	201
IA	1216	140	2	142	131	PA	6706	853	14	867	817
ID	998	126	1	127	124	RI	363	41	1	42	40
IL	4787	559	18	577	532	SC	2356	278	5	283	266
IN	3873	528	14	542	511	SD	348	59	1	60	57
KS	1357	184	1	185	183	TN	3266	394	1	395	369
KY	1454	210	11	221	193	TX	11215	1326	38	1364	1262
LA	1363	174	4	178	165	UT	1452	164	7	171	160
MA	3015	299	15	314	284	VA	5369	696	14	710	683
MD	2611	298	9	307	292	VT	448	46	2	48	43
ME	927	105	2	107	103	WA	5098	563	15	578	542
MI	5781	587	20	607	565	WI	2460	341	7	348	323
MN	2330	271	14	285	262	WV	717	92	0	92	86
MO	2722	334	4	338	327	WY	392	65	1	66	63
MS	837	103	2	105	94	XX	758	83	11	94	72

State	Total BSM	Rank	State	Total BSM	Rank
CA	1621	1	OR	201	27
TX	1262	2	KY	193	28
FL	924	3	CT	189	29
PA	817	4	KS	183	30
NY	778	5	OK	176	31
OH	695	6	LA	165	32
VA	683	7	UT	160	33
MI	565	8	NM	141	34
GA	554	9	IA	131	35
WA	542	10	ID	124	36
CO	541	11	AR	120	37
IL	532	12	NE	111	38
IN	511	13	ME	103	39
AZ	439	14	MS	94	40
NC	429	15	WV	86	41
TN	369	16	MT	78	42
NJ	367	17	AK	69	43
MO	327	18	DE	69	44
WI	323	19	WY	63	45
MD	292	20	SD	57	46
MA	284	21	HI	55	47
SC	266	22	VT	43	48
MN	262	23	RI	40	49
NV	240	24	ND	39	50
NH	216	25	DC	30	51
AL	204	26	XX	72	52

	TOTAL "MEM"	ACTIVE "MEM"	ACTIVE "SUB"	TOTAL "ACTIVE"	TOTAL "BSM"
TOTALS	153541	17553	481	18034	16835

DEFINITIONS: MEM = Member Signed Certificate

Total MEM = Total # Constituents Per State w-Member Signed Certificate

ACTIVE MEM = Current Dues Paying or Lifetime Donor w-Signed Certificate

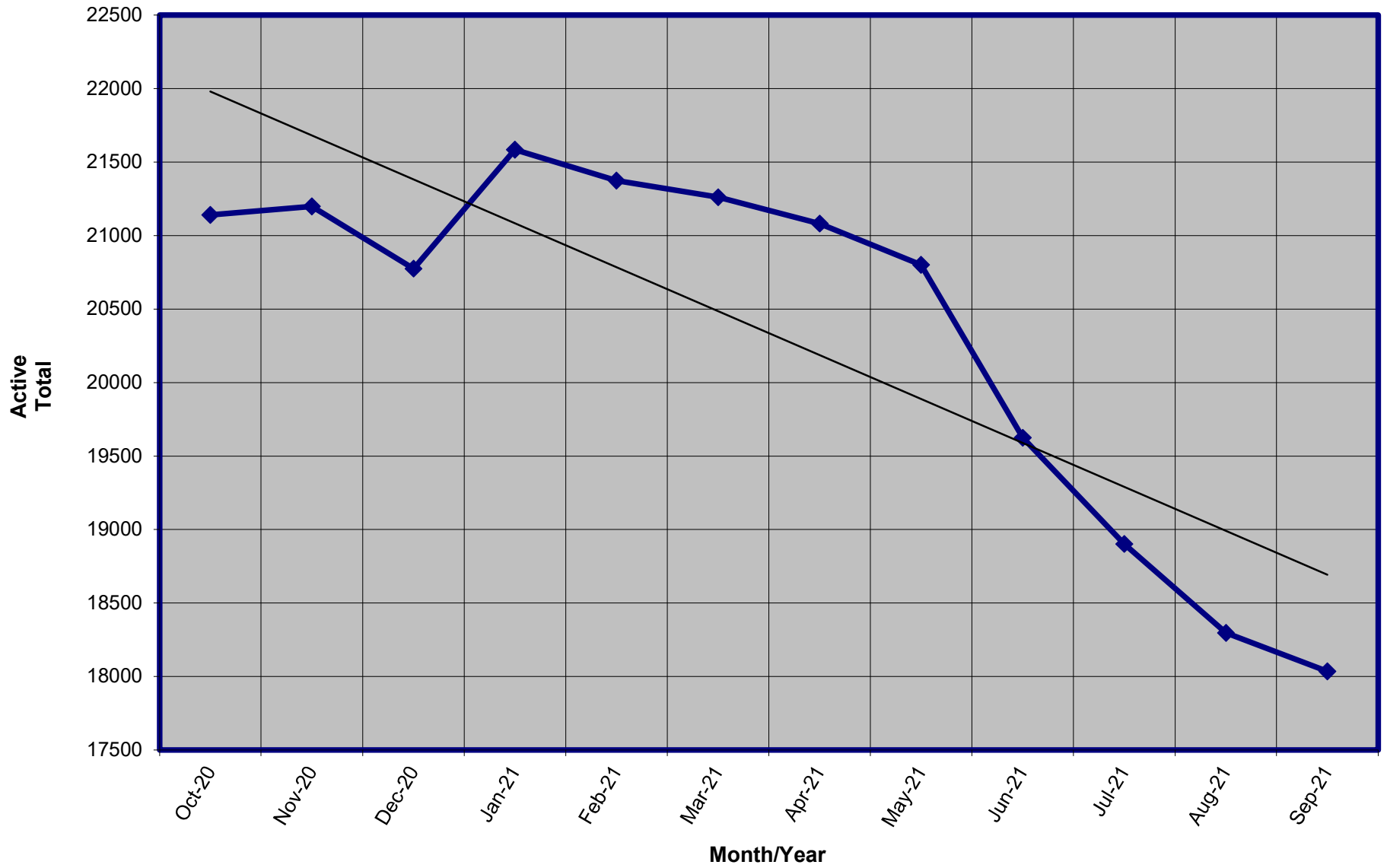
ACTIVE SUB (ACTIVE NON MEM) = Current Dues Paying or Lifetime Donors Who Have NOT Signed the Certificate (Formerly Called "Subscriber")

TOTAL ACTIVE = Current Dues Paying or Lifetime Donor

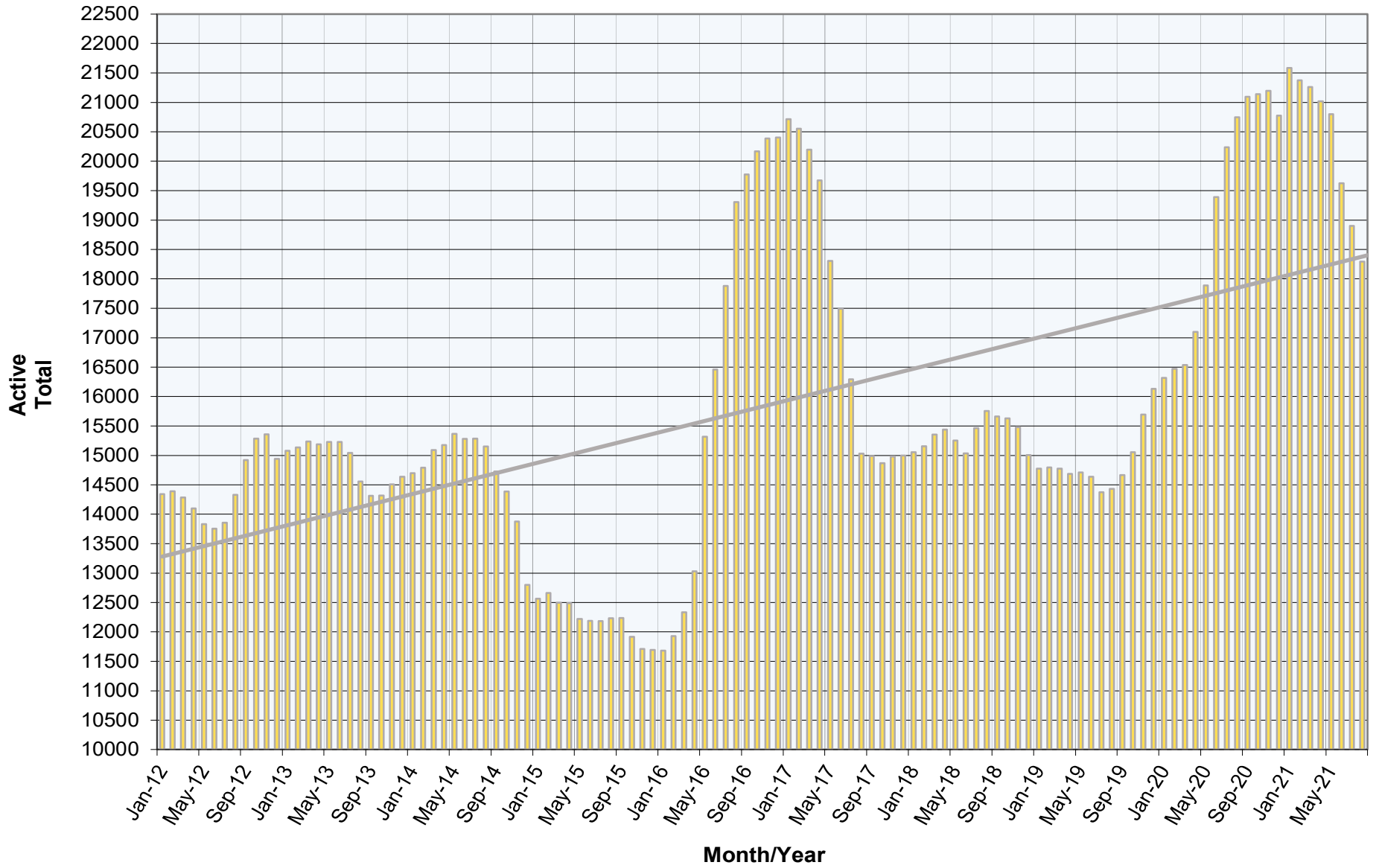
BSM = By Law Definition of "Sustaining Member" and number used for delegate count

(Art 5-3: "Sustaining member" is any Party member who has given at least \$25 to the Party in the prior twelve months, or who is a life member.)

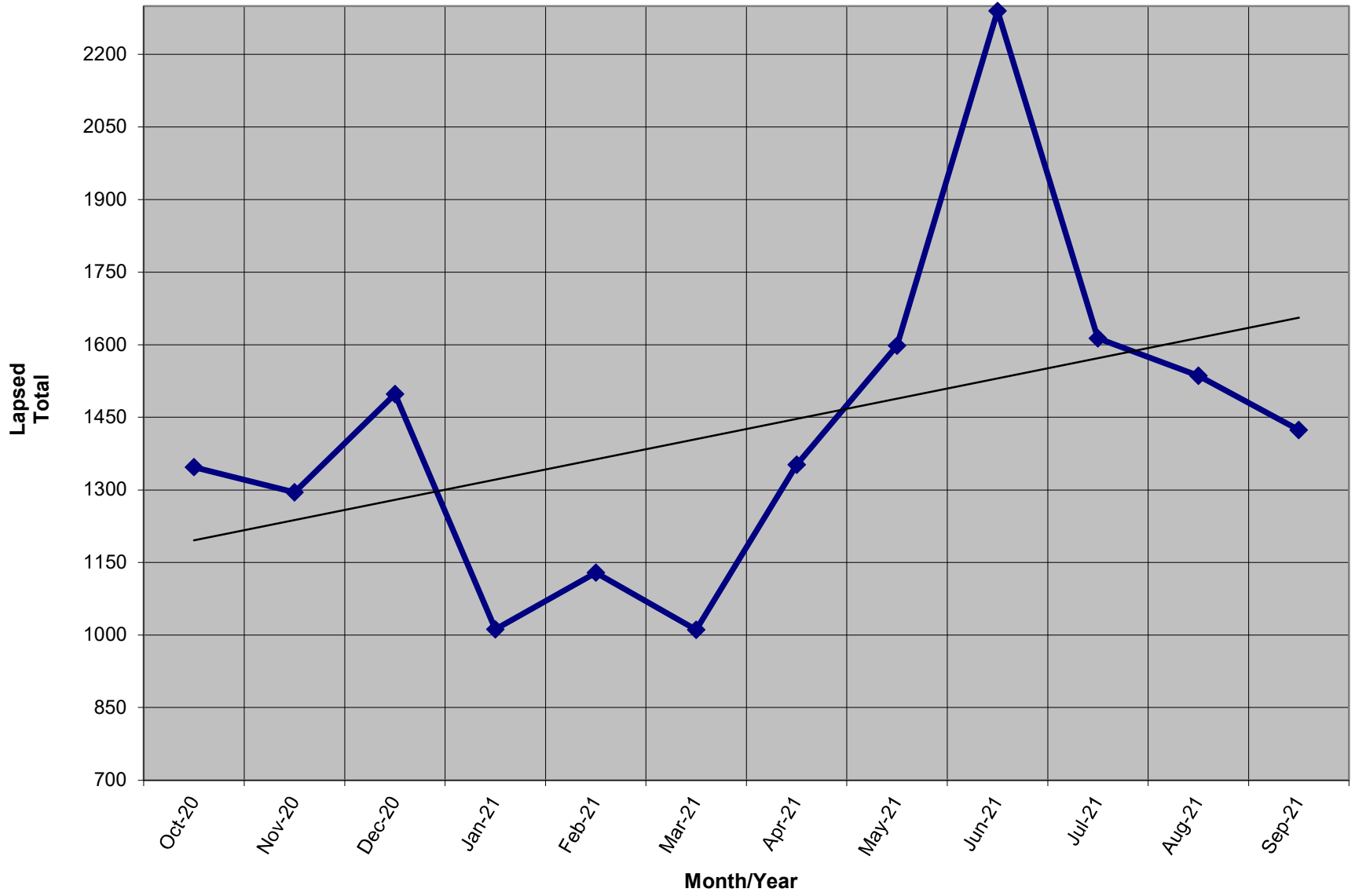
Active Donors - Past 12 Months



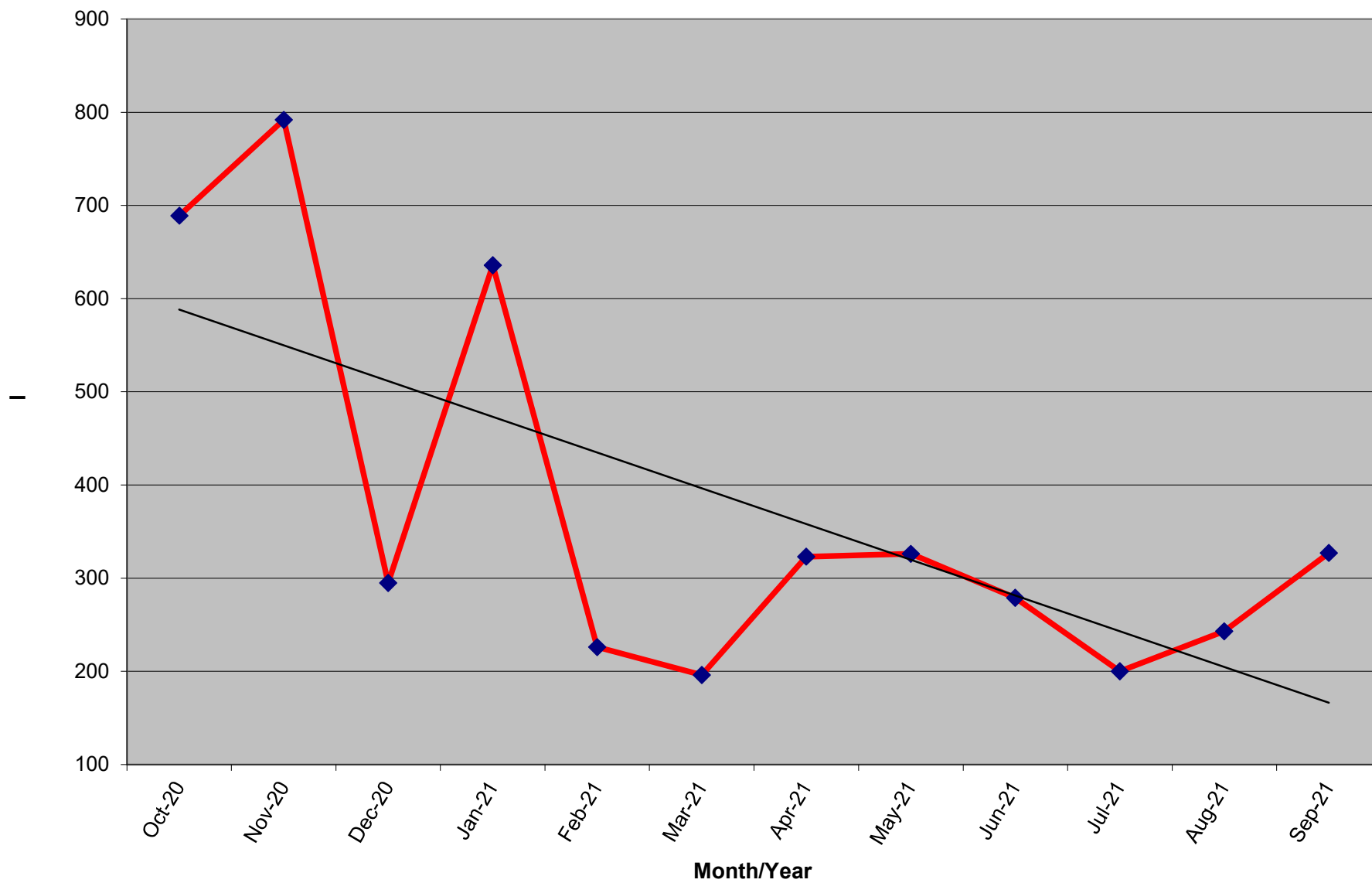
Active Donors - 2012-2021



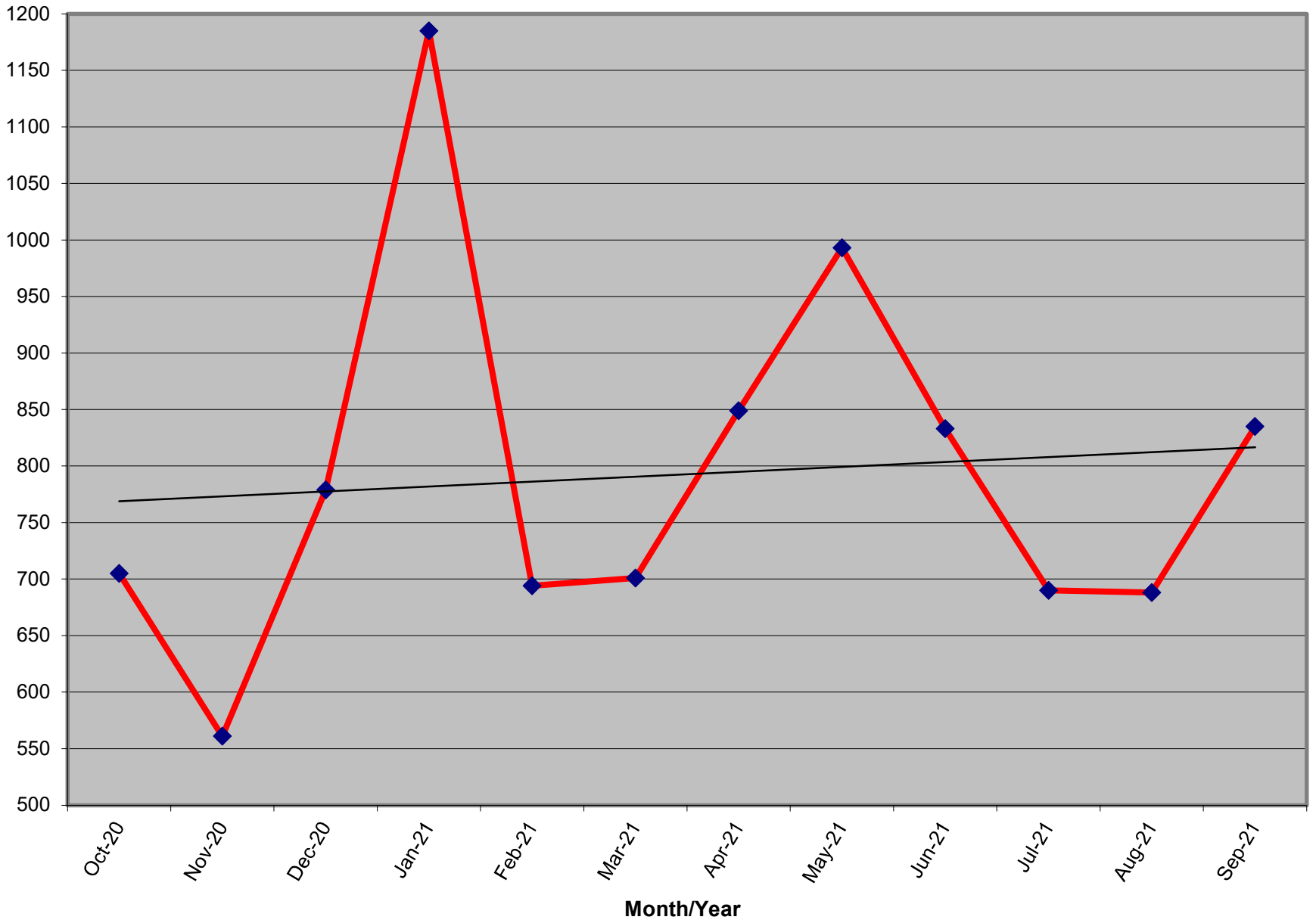
Lapsed - Dropped - Donors - Past 12 Months



New Donors Past 12 Months



Renew Donors - Past 12 Months



% OF ACTIVE MEMBERS VS. REGISTERED LIBERTARIAN VOTERS BY STATE

STATE	TI Reg Voters	Reg Lib	% Reg L to TI Reg	Total Active By State	Active to Registered
AK	599,687	6,973	1.16%	71	1.02%
AL	3,500,894	0	n/a	207	n/a
AR	1,834,540	690	0.04%	123	17.83%
AZ	4,300,058	38,427	0.89%	463	1.20%
CA	22,078,290	212,686	0.96%	1,659	0.78%
CO	4,273,753	42,223	0.99%	570	1.35%
CT	2,263,958	3,270	0.14%	194	5.93%
DC	527,773	2,131	0.40%	31	1.45%
DE	735,293	1,880	0.26%	70	3.72%
FL	14,482,638	41,529	0.29%	972	2.34%
GA	7,729,838	0	n/a	589	n/a
HI	832,000	0	n/a	54	n/a
IA	2,123,862	14,349	0.68%	140	0.98%
ID	983,716	10,637	1.08%	126	1.18%
IL	8,364,999	0	n/a	559	n/a
IN	4,753,703	0	n/a	528	n/a
KS	1,939,620	21,297	1.10%	184	0.86%
KY	3,573,544	13,956	0.39%	210	1.50%
LA	3,099,535	15,210	0.49%	174	1.14%
MA	4,666,299	18,803	0.40%	299	1.59%
MD	4,181,817	15,487	0.37%	298	1.92%
ME	1,063,383	0	n/a	105	n/a
MI	8,127,040	0	n/a	587	n/a
MN	3,588,563	0	n/a	271	n/a
MO	4,213,092	0	n/a	334	n/a
MS	1,985,928	0	n/a	103	n/a

Reg totals provided by ballot-access.org & worldpopulationreview.com - last update 09/03/21

STATE	TI Reg Voters	Reg Lib	% Reg L to TI Reg	Total Active By State	Active to Registered
MT	696,292	0	n/a	85	n/a
NC	7,080,435	44,906	0.63%	455	1.01%
ND	581,379	0	n/a	43	n/a
NE	1,268,390	18,291	1.44%	111	0.61%
NH	1,001,446	0	n/a	229	n/a
NJ	6,366,186	18,199	0.29%	383	2.10%
NM	1,360,108	12,798	0.94%	145	1.13%
NV	1,797,384	17,554	0.98%	250	1.42%
NY	12,420,821	21,220	0.17%	805	3.79%
OH	7,774,767	0	n/a	724	n/a
OK	2,272,252	15,734	0.69%	184	1.17%
OR	2,951,501	21,981	0.74%	217	0.99%
PA	8,897,739	40,324	0.45%	853	2.12%
RI	795,212	0	n/a	41	n/a
SC	3,513,225	0	n/a	278	n/a
SD	582,740	2,429	0.42%	59	2.43%
TN	3,931,248	0	n/a	394	n/a
TX	16,211,198	0	n/a	1,326	n/a
UT	1,709,910	19,151	1.12%	164	0.86%
VA	5,975,696	0	n/a	696	n/a
VT	495,267	0	n/a	46	n/a
WA	4,861,482	0	n/a	563	n/a
WI	3,684,726	0	n/a	341	n/a
WV	1,249,056	8,998	0.72%	92	1.02%
WY	302,963	2,891	0.95%	65	2.25%
XX Est.	4,238,107	0	n/a	83	n/a
Totals	217,843,353	704,024	0.66%	17,553	2.49%

% OF ACTIVE MEMBERS VS. 2010 CENSUS POPULATION BY STATE

STATE	2010 Census	TI Active By State	Active to Population
AK	710,231	71	0.0100%
AL	4,779,736	207	0.0043%
AR	2,915,918	123	0.0042%
AZ	6,392,017	463	0.0072%
CA	37,253,956	1,659	0.0045%
CO	5,029,196	570	0.0113%
CT	3,574,097	194	0.0054%
DC	601,723	31	0.0052%
DE	897,934	70	0.0078%
FL	18,801,310	972	0.0052%
GA	9,687,653	589	0.0061%
HI	1,360,301	54	0.0040%
IA	3,046,355	140	0.0046%
ID	1,567,582	126	0.0080%
IL	12,830,632	559	0.0044%
IN	6,483,802	528	0.0081%
KS	2,853,118	184	0.0064%
KY	4,339,367	210	0.0048%
LA	4,533,372	174	0.0038%
MA	6,547,629	299	0.0046%
MD	5,773,552	298	0.0052%
ME	1,328,361	105	0.0079%
MI	9,883,640	587	0.0059%
MN	5,303,925	271	0.0051%
MO	5,988,927	334	0.0056%
MS	2,967,297	103	0.0035%

ACTIVE TO POPULATION BY RANK

STATE	2010 Census	TI Active By State	Active to Population
MT	989,415	85	0.0086%
NC	9,535,483	455	0.0048%
ND	672,591	43	0.0064%
NE	1,826,341	111	0.0061%
NH	1,316,470	229	0.0174%
NJ	8,791,894	383	0.0044%
NM	2,059,179	145	0.0070%
NV	2,700,551	250	0.0093%
NY	19,378,102	805	0.0042%
OH	11,536,504	724	0.0063%
OK	3,751,351	184	0.0049%
OR	3,831,074	217	0.0057%
PA	12,702,379	853	0.0067%
RI	1,052,567	41	0.0039%
SC	4,625,364	278	0.0060%
SD	814,180	59	0.0072%
TN	6,346,105	394	0.0062%
TX	25,145,561	1,326	0.0053%
UT	2,763,885	164	0.0059%
VA	8,001,024	696	0.0087%
VT	625,741	46	0.0074%
WA	6,724,540	563	0.0084%
WI	5,686,986	341	0.0060%
WV	1,852,994	92	0.0050%
WY	563,626	65	0.0115%
Totals	308,745,538	17,470	0.0057%

STATE	Rank	TI Active By State	Active to Population
NH	1	229	0.0174%
WY	2	65	0.0115%
CO	3	570	0.0113%
AK	4	71	0.0100%
NV	5	250	0.0093%
VA	6	696	0.0087%
MT	7	85	0.0086%
WA	8	563	0.0084%
IN	9	528	0.0081%
ID	10	126	0.0080%
ME	11	105	0.0079%
DE	12	70	0.0078%
VT	13	46	0.0074%
SD	14	59	0.0072%
AZ	15	463	0.0072%
NM	16	145	0.0070%
PA	17	853	0.0067%
KS	18	184	0.0064%
ND	19	43	0.0064%
OH	20	724	0.0063%
TN	21	394	0.0062%
GA	22	589	0.0061%
NE	23	111	0.0061%
SC	24	278	0.0060%
WI	25	341	0.0060%
MI	26	587	0.0059%

STATE	Rank	TI Active By State	Active to Population
UT	27	164	0.0059%
OR	28	217	0.0057%
MO	29	334	0.0056%
CT	30	194	0.0054%
TX	31	1,326	0.0053%
FL	32	972	0.0052%
MD	33	298	0.0052%
DC	34	31	0.0052%
MN	35	271	0.0051%
WV	36	92	0.0050%
OK	37	184	0.0049%
KY	38	210	0.0048%
NC	39	455	0.0048%
IA	40	140	0.0046%
MA	41	299	0.0046%
CA	42	1,659	0.0045%
IL	43	559	0.0044%
NJ	44	383	0.0044%
AL	45	207	0.0043%
AR	46	123	0.0042%
NY	47	805	0.0042%
HI	48	54	0.0040%
RI	49	41	0.0039%
LA	50	174	0.0038%
MS	51	103	0.0035%
Totals		17,470	0.0057%

* 2010 US Census Figures - does not include PR or other territories or out of US ("XX" states)